



TPS®/SMS (Software Management System)

is a module that, when added to [TPS®/NetWork File Manager \(NFM\)](#), provides software distribution and software management while utilizing the file distribution capabilities of TPS®/NFM. If you need a system to manage software installs or updates on a few machines or across thousands on your network, TPS®/SMS can provide you with an easy software delivery and tracking system all with a click of the mouse.

Do you need a way to track or inventory software? The TPS®/Software Management System Database screen can quickly give you an overview of all software installed using the TPS®/SMS system. From this screen, an administrator can see what version is installed on each computer and even update those machines with the Update Software screen.

TPS®/Software Management System can also provide several types of checks before installing software including verifying the operating system, checking hardware requirements (i.e.; memory, disk space, processor speed, etc.) and validating any prerequisite software needed. This provides you the control to only send software to computers that meet those requirements.

A fully functional scheduler allows the system administrator to send software during off-peaks periods or while the user is not there. If a software installation or update needs to occur immediately, bypass the scheduler and set it to happen now.

TPS®/Software Management System can also track and monitor software distribution on several UNIX® and Windows® platforms. A perfect solution for companies that support different types of platforms and operating systems on their network.

Accessible through a web-based GUI application, monitoring software installation or removal is easy. The system administrator can see software distribution happening live or view the history of a particular software installation allowing you to catch any errors during installation (i.e.; computer turned off, out of disk space, permission problems, etc.).

Installing and managing software, either new software distributions or software updates, can be very time consuming. An organized system can cut down on the time involved. TPS®/Software Management System can keep you on top of your network

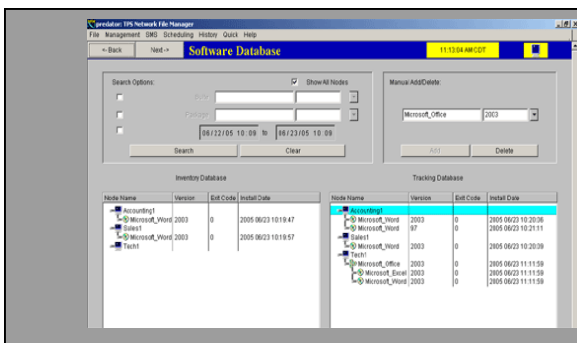
HIGHLIGHTS

- ✔ Distribute software updates or new software with a click of a button
- ✔ Organizes files into packages and suites for easy identification and distribution
- ✔ Manage / Track different versions of software installed on the network
- ✔ Fully functional scheduler for later distribution
- ✔ Provides an accounting / inventory of software distribution (both software titles and software versions)
- ✔ Create software install / uninstall scripts to run during installation or un-installation
- ✔ Runs on Windows® and several UNIX® platforms (including Linux®, AIX®, Solaris®, HP-UX®)
- ✔ Uses the [TPS®/NetWork File Manager \(NFM\)](#) engine
- ✔ GUI-based application available through web browser
- ✔ Supports data encryption and compression during file transfers

PRODUCT POSITIONING

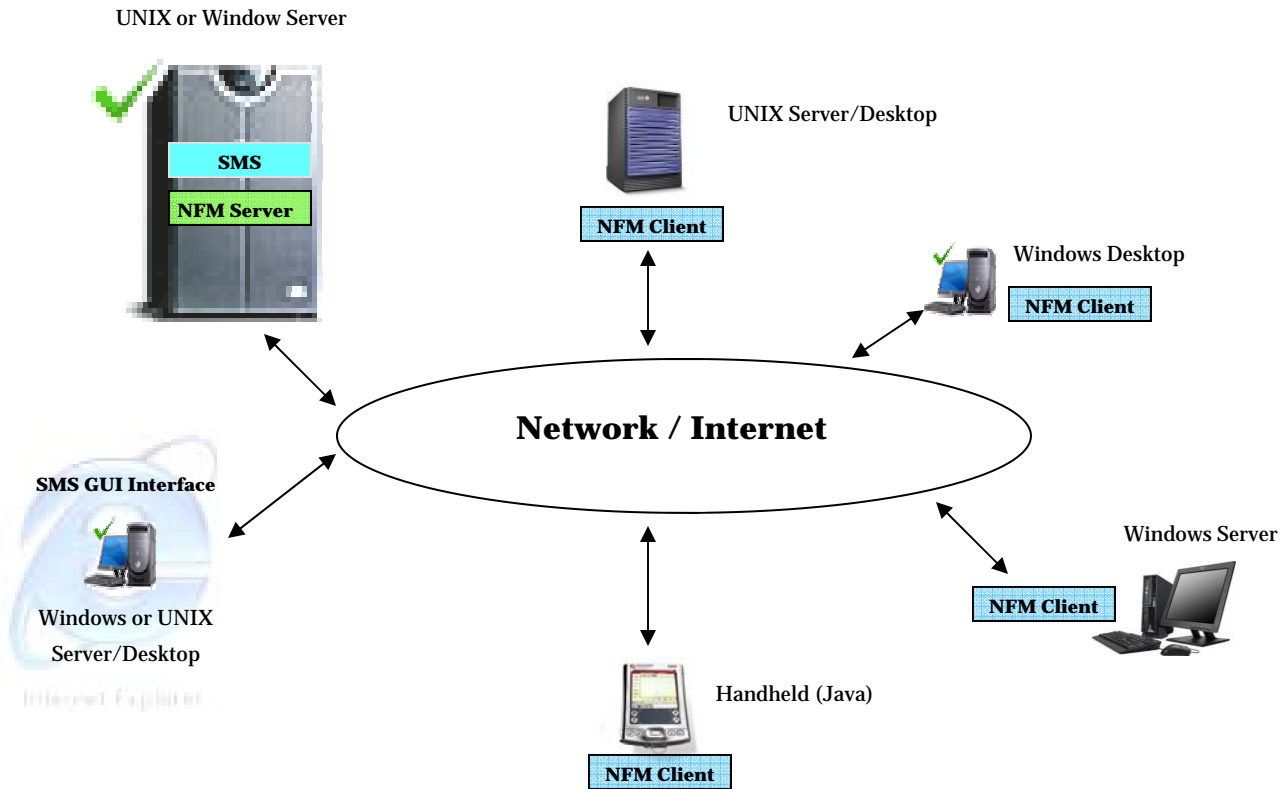
TPS®/SMS is best used when the company needs:

- System to track and inventory software
- Method to manage software distribution among diverse platforms



The Software Database screen shows software packages or suites that have been installed using the TPS®/SMS system. An inventory section shows the latest package or suite versions while the tracking section shows all package or suites versions that have been installed.

TPS®/SMS Topography



TPS®/Software Management Systems components:



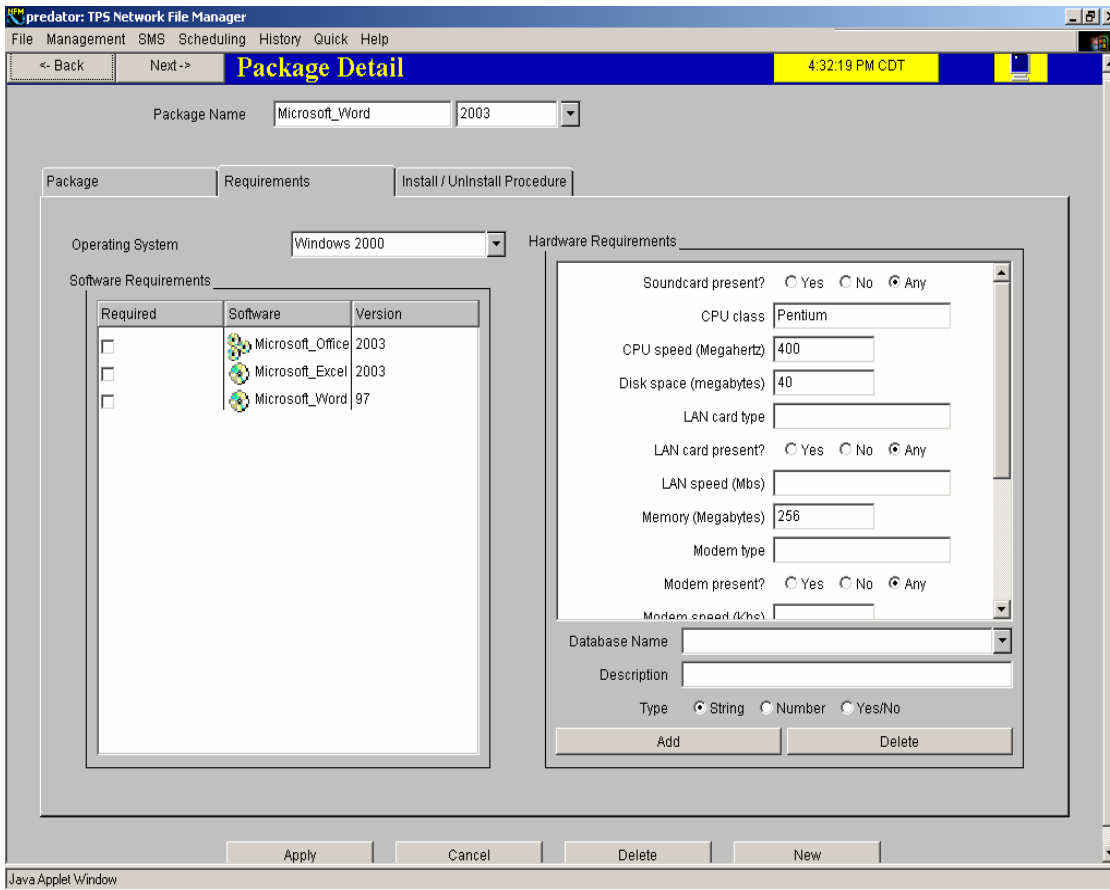
TPS®/NetWork File Manager Server is the main 'engine' of the NFM system. Users can access the NFM system by using the NetWork File Manager Interface or Software Management System Interface (via web browser). All configuration options for the NFM system are stored in the server database. When a file transfer takes place, either immediately or scheduled, the NFM server will instruct the NetWork File Manager Clients to transfer files (peer-to-peer). Statistical data about the file transfer will be recorded on the Server for auditing purposes. [Please see the TPS®/NetWork File Manager Product Sheet for more Information.](#)



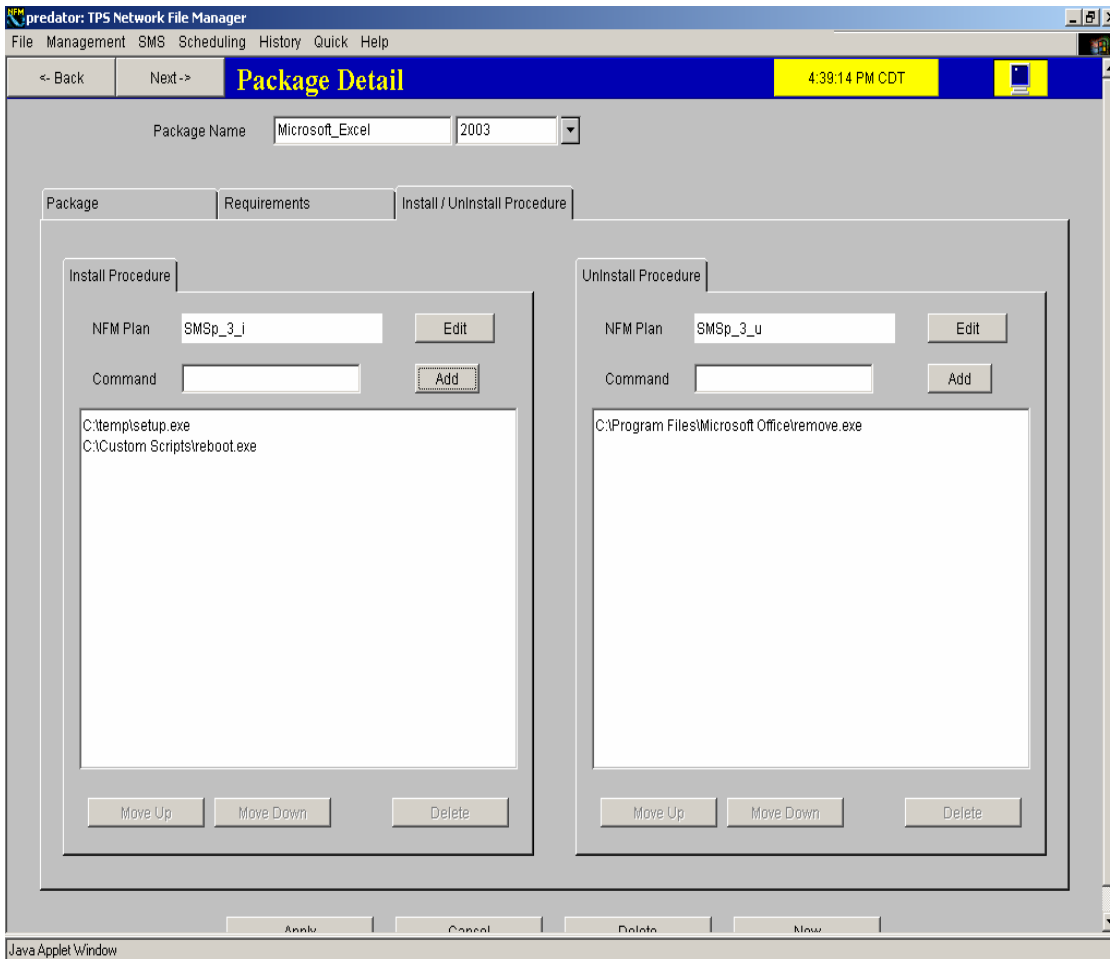
TPS®/NetWork File Manager Client is responsible for performing requests from the NFM server to send and receive files as well as local program execution. We recommend using TPS®/NetWork File Manager Client on any machine you want to transfer files to / from. However, we do support NFM Client to FTP type transfers when installing TPS®/NFM Client is not an option. This is a secure FTP process unlike the normal FTP process. [Please see the TPS®/NetWork File Manager Product Sheet for more Information.](#)



TPS®/Software Management System Interface is a JAVA-based user interface, accessible via a browser or stand-alone Windows application, that communicates directly to the NFM server to perform and monitor SMS system activities.



Among other things, the Package Detail screen allows you to specify several types of requirements for the software package. These include a specific operating system type, minimum hardware requirements, and any software requirements.



The Package Detail screen also allows you to specify Windows or UNIX commands to run before install and removal. Multiple commands can be executed.

predator: TPS Network File Manager

File Management Format Tools Table Arrange Window Help Type a question for help

Software Database 4:49:40 PM CDT

Search Options: Show All Nodes

Suite:

Package:

06/22/05 16:45 to 06/23/05 16:45

Search Clear

Manual Add/Delete:

Add Delete

Inventory Database Tracking Database

Node Name	Version	Exit Code	Install Date
Accounting1			
Microsoft_Word	2003	0	2005 06/23 10:19:47
Sales1			
Microsoft_Word	2003	0	2005 06/23 10:19:57

Node Name	Version	Exit Code	Install Date
Accounting1			
Microsoft_Word	2003	0	2005 06/23 10:20:06
Microsoft_Word	97	0	2005 06/23 10:21:11
Sales1			
Microsoft_Word	2003	0	2005 06/23 10:20:09
Tech1			
Microsoft_Office	2003	0	2005 06/23 11:11:59
Microsoft_Excel	2003	0	2005 06/23 11:11:59
Microsoft_Word	2003	0	2005 06/23 11:11:59

Java Applet Window

The Software Database screen shows software packages or suites that have been installed using the TPS®/SMS system. An inventory section shows the latest package or suite versions while the tracking section shows all package or suites versions that have been installed using the TPS®/SMS system.

predator: TPS Network File Manager

File Management SMS Scheduling History Quick Help Type a question for help

Update Software 4:51:53 PM CDT

Software: Microsoft_Office 2003

Target Node: ALL_COMPUTERS

Run: Install Procedure

History:

Initial State:

Start Date: June 2005

S	M	T	W	T	F	S
			1	2	3	4
5	6	7	8	9	10	11
12	13	14	15	16	17	18
19	20	21	22	23	24	25
26	27	28	29	30		

Start Time: 04:51:31 PM CDT Schedule

Check: OS Requirements Run Now Monitor

Software Requirements

Hardware Requirements

Java Applet Window

The Update Software screen allows the user to schedule a software distribution on a future date and/or time or run the distribution now.

Features

Software Management:

- Group software components together in packages and suites
- Manage different software versions and decide which computers to update and when
- Hardware, software and operating system requirements for each software
- Create install and uninstall procedures, for each software, to run when the software is installed or removed

Software Distribution:

- Schedule an update or install during off-peak times allowing you to execute commands and/or change system configuration without interrupting the end user
- Group computers together and distribute software to several computers with the click of one button
- Automatically install / uninstall / update software without the end user knowing

Software Monitoring / Tracking:

- Monitor the progress of the submitted software distribution. If a distribution fails, the option is given to correct the error and re-send
- Track software on the company's network to provide a history of all packages/suites installed with TPS®/SMS
- Special software database screen, with search capabilities, to locate software installed on your network
- Inventory latest software release/version on company's network

Use NFM functionality:

Since TPS®/SMS uses the TPS®/NFM engine, advanced users can use added features within TPS®/NFM (data compression and encryption, IP Multicasting, etc.)

TPS®/NFM provides several possible file transfer mechanisms.

The Primary transfer protocol is TCP/IP. The system also supports sending files via FTP. Additional file transfer mechanisms can be found in the *TPS®/NFM User's Guide*.

Web Browser Interface:

TPS®/Software Management System (SMS) configuration and monitoring is done through a web browser interface allowing the system administrator to connect to the server remotely. Users of the TPS®/SMS product will find the interface easy to use and secure.

Additional Resources

[NFM White Paper](#)

A technical layout of the NFM system including screen shots

[NFM Sales Brochure](#)

NFM product description

EVALUATION LICENSES

Evaluation copies of TPS® software products are available for a pre-specified timeframe under the terms and conditions of the single-page TPS® Evaluation Agreement.

OPERATING ENVIRONMENT

Hardware:

IBM® AIX® 32-bit - IBM® pSeries

LINUX®

IBM® pSeries (32-bit)

IBM® zSeries

Intel®/AMD® (32 / 64-bit)

Intel® Itanium (64-bit)

Windows® 2000/2003/XP/NT

Intel® Compatible

Software:

[TPS®/Network File Manager \(NFM\)](#)



14100 San Pedro Avenue, Suite 600
San Antonio, TX USA 78232-4399

Phone: (210) 496-1984

Fax: (210) 490-6805

email: sales@tps.com

<http://www.tps.com>

